



## The project

ROBIN aims to empower Europe's regions to adapt their governance models and structures in ways that accelerate the achievement of their circular bioeconomy targets while promoting social innovation and accounting for different territorial contexts.

### IT WILL SUPPORT 5 REGIONAL AUTHORITIES ACROSS EUROPE TO:

- adapt their governance models to support the scaling up of the bio-based value chains of their ecosystem
- exploit existing knowledge from earlier work and knowhow in bioeconomy policy and social innovation
- network and source knowledge from peers and consort with the European Commission's Circular Cities and Regions Initiative's Coordination and Support Office (CCRI-CSO).

### PROJECT ID

**PROJECT NAME:** ROBIN

"Deploying circular bioeconomies at regional level with a territorial approach"

**GRANT AGREEMENT:** 101060504

**PROGRAMME:** Horizon Europe

**TYPE OF ACTION:** HORIZON-CSA

**START DATE:** 1 September 2022

**DURATION:** 36 months

**EU CONTRIBUTION:** 2,499,951.00€

**COORDINATOR:** Q-PLAN INTERNATIONAL ADVISORS PC

## OUR TEAM



Q-PLAN INTERNATIONAL ADVISORS PC  
[www.qplan-intl.gr](http://www.qplan-intl.gr)



FUNDACION CORPORACION TECNOLOGICA DE ANDALUCIA  
[www.corporaciontecnologica.com](http://www.corporaciontecnologica.com)



WHITE RESEARCH SRL  
[www.white-research.eu](http://www.white-research.eu)



PEDAL CONSULTING SRO  
[www.pedal-consulting.eu](http://www.pedal-consulting.eu)



STEINBEIS 2I GMBH  
[www.steinbeis-europa.de](http://www.steinbeis-europa.de)



ROZVOJOVA AGENTURA ZILINSKEHO SAMOSPRAVNEHO KRAJA NO  
[www.razsk.sk](http://www.razsk.sk)



MUNSTER TECHNOLOGICAL UNIVERSITY  
[www.circbio.ie](http://www.circbio.ie)



ARISTOTELIO PANEPISTIMIO THESSALONIKIS  
[www.auth.gr](http://www.auth.gr)



REGION OF CENTRAL MACEDONIA  
[www.pkm.gov.gr](http://www.pkm.gov.gr)



CONSEJERÍA DE AGRICULTURA, PESCA, AGUA Y DESARROLLO RURAL  
[www.juntadeandalucia.es](http://www.juntadeandalucia.es)



INSTITUTO ANDALUZ DE INVESTIGACION Y FORMACION AGRARIA PESQUERA ALIMENTARIA Y DE LA PRODUCCION ECOLOGICA  
[www.juntadeandalucia.es](http://www.juntadeandalucia.es)



SOUTHERN REGIONAL ASSEMBLY  
[www.southernassembly.ie](http://www.southernassembly.ie)



SCAN ME

VISIT OUR WEBSITE  
[www.robin-project.eu](http://www.robin-project.eu)

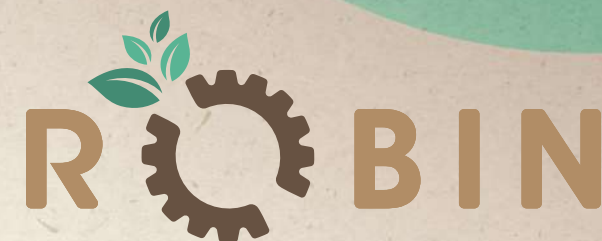
CONTACT US  
[info@robin-project.eu](mailto:info@robin-project.eu)

### FOLLOW US

- Robin project
- Robin Project
- @Robinproject1
- Robin Horizon Europe Project



Funded by the European Union



DEPLOYING CIRCULAR BIOECONOMIES AT REGIONAL LEVEL WITH A TERRITORIAL APPROACH

[www.robin-project.eu](http://www.robin-project.eu)

## The Challenge

Europe's regional authorities can play a crucial role in the socioeconomic development of their local ecosystems; yet, most of European regions are still exploring their position concerning bioeconomy. Bioeconomy can be a key pillar when it comes to a more circular and sustainable ways of development and Europe's regional governments should adapt their governance models and structures to enable practical applications of bioeconomy-related knowledge and advances. The newest policy mandates in the field of circularity increase the complexity of needed and expects actions for an integrated transition; however recently, high-quality knowledge has been developed to guide the bioeconomy transition.



## OUR OBJECTIVES

Deeper understanding of existing bioeconomy governance practices and models in Europe

Enhanced understanding of the bioeconomy's benefits amongst all stakeholders (including primary biomass producers as well as consumers)

Improved regional governance models with increased stakeholder engagement accelerating the circular bioeconomy transition of European regions

Better informed bioeconomy strategies creating conducive conditions for investments in sustainable business opportunities offered by local bio-based economies

Improved environmental footprint of bio-based products and services

Increased cross-regional coordination under the CCRI reinforcing the EU science-policy interface for addressing Sustainable Development Goals

## Territorial approach

A territorial approach is followed in the deployment of circular bio-economies at regional level, which enables to:

- Focus on functional distribution of space based on degree of rurality / urbanisation (rural – semi rural – peri-urban – urban)
- Examine the natural, geographical, economic, social, political features of the region
- Examine the central control and the hierarchical organisation of networks within space
- Examine how the regional ecosystem is affected by spatial planning policies (regional development plans, urban development plans, etc.)



## 5 steps to innovative circular bioeconomy governance structures and models in the ROBIN Regions

### STEP 1 Set the scene on regional bioeconomy governance models

ROBIN explores the existing governance models in Europe, develops a typology of these models and identifies good governance practices. It deepens the knowledge around the barriers, challenges and opportunities for the uptake of circular bioeconomy governance models through consultation with and active engagement of regional quadruple helix stakeholder representatives included in the Multi-Actor Regional Constellations (MARC) of the project.

### STEP 2 Co-create regional governance models and structures

Through a bottom-up approach, ROBIN engages the MARCs to co create governance models that overcome barriers and seize opportunities for circular bioeconomy. Moreover, it develops a practical Toolbox that contains actionable knowledge, a portfolio of coordination and support actions and user-friendly tools.

### STEP 3 Set up and validate the ROBIN Toolbox

ROBIN deploys the ROBIN Toolbox within diverse territorial contexts across 5 European regions aiming at supporting the development and operation of governance models towards circular bioeconomy transition. The diversity of pilot regions in terms of socioeconomic, institutional and ecological features enable the replication of results.

### STEP 4 Monitor & Evaluate results – Share of best practices

ROBIN exchanges best practices among regions, to promote the development of cross-regional partnerships on regional bioeconomy, transfer knowledge and experience, build partnerships and enhance openness, transparency and engagement. Also, it develops an integrated replication guideline with the generated knowledge and tools which are validated through a robust monitoring and evaluation framework.

### STEP 5 Communicate & Deploy synergies

ROBIN supports the dissemination and communication of its results through a tailored strategy involving the set-up of ROBIN Advisory Board, while also creating synergies with key European and national networks, as well as the Circular Cities and Regions Initiative – Coordination and Support Office (CCRI-CSO).

